



Enhancement Submersible Sewage Pump

WQ Type Submersible Sewage Pump

增强型潜水排污泵

WQ型潜水排污泵



© 由于产品技术不断进步，蓝深集团保留修改设计的权利，恕不另行通知。LS1401
Due to constantly progressive technology, Lanshen Group has the right to amend the design, without prior notice. LS1401



小舟(上海) 流体控制技术有限公司

公司网址: www.aikonchina.com

业务合作: infor@aikonchina.com

联系地址: 上海市宝山区沪太路4288号永乐汇文创意园A栋209

SHANGHAI PUMPING TECH INTERNATIONAL CO.,LTD

Website: www.aikoncontrol.com

E-mail: infor@aikonchina.com

Add: Building A, No.4288 Hutai Road, Baoshan District, Shanghai, China

结构特点

Features of structure

增强型潜水排污泵的设计处处体现着高可靠性的要求。
Design of enhancement submersible sewage pumps is featured with high reliability in every respect.

电动机

特殊的绝缘设计确保电机在少量进水的环境下依然能正常使用。电机的优化设计保证了水泵能够在水力部件被泥沙部分淹没的环境下开机启动。

Motor

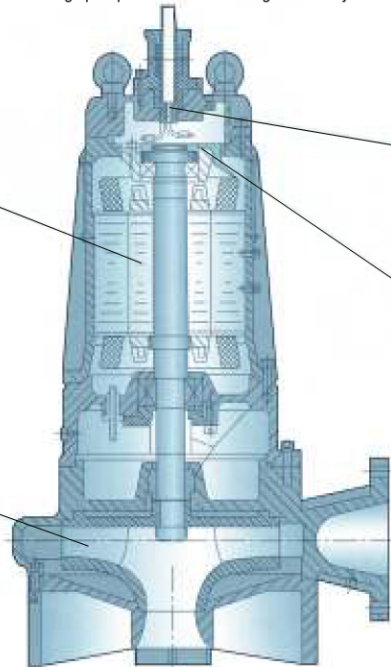
The unique insulation design ensures the motor can still run normally if little water is in it. The optimal design of motor guarantees the pump is able to start running when the hydraulic part is submerged by some mud and sands.

水力部件

设计运用了先进的CFD流场诊断技术，具有高扬程、高效、无堵塞、耐磨损等优点，处于国际先进水平。该项成果已申请发明专利。

Hydraulic part

Processed with advanced CFD flow field diagnosis technology, it has many merits like high head, total head, high efficiency, no block and anticorrosion, etc., reaches international leading level.



密封设计

为了满足深度潜水的要求，在水泵密封上采用了多项改进措施，独有的密封技术，更加安全可靠。

Sealing design

To meet the requirement of deep submersion, we take many improvement measures for pump sealing. Unique sealing technique, which enables the product to be safer and more reliable.

保护措施

除常规电机保护外，还在接线盒腔、电机和油室内分别设置了泄露检测器，电机定子绕组内设置了定子超温保护装置。

Protection measures

Besides usual motor protection, the junction box chamber, motor and oil chamber are mounted with the leakage detector respectively, and two sets of stator ultra-temperature protector are installed in the windings of motor stator.

增强型潜水排污泵

Design of enhancement submersible sewage pumps

改进如下设计：

- 优化设计整体结构
- 应用新材料
- 改进电机
- 全新设计的水密电缆入口
- 计算机模拟技术最优化设计水力部件

Improve the following items:

- Optimization design of integral structure
- Use new material
- Improved motor
- Newly designed watertight cable inlet
- Optimization design of hydraulic power components with the help of computer modeling technique

提升如下性能：

- 延伸整机使用寿命
- 增强耐用性
- 增强使用可靠性
- 增强抗阻塞、抗缠绕性

Upgrade the following performance:

- Prolong the service life of the machine
- Strengthen its durability
- Reinforce its service reliability
- Enhance its capability of anti-block or inter-twist

服务体系：

通过遍布全国的销售服务网络，蓝深集团可以保证在国内任何地区与用户保持密切联系，向用户提供及时完整的服务。

Service system:

Through our sales network that spread all over the country, Lanshen Group is able to guarantee a close contact with users throughout the country and offer perfect service in time.

产品适用范围

Product range of use

工厂、商业严重污染废水的排放

Be used for the drainage of serious polluted water in factory or commerce.

住宅区的污水排放

Be used for the drainage of sewage in residential area.

医院、宾馆的污水排放

Be used for the drainage of sewage in hospital and hotel.

勘探、矿山配套附机

Be used as support machine for exploration and mining.

自来水厂的给排水

Be used for the water supply and drainage in waterworks.

城市污水处理厂给排水系统

Be used for the water supply and drainage system in city sewage treatment factory.

人防系统排水

Be used for the drainage of water in civil air defense system.

市政工程、建筑工地

Be used for the municipal engineering and construction site.

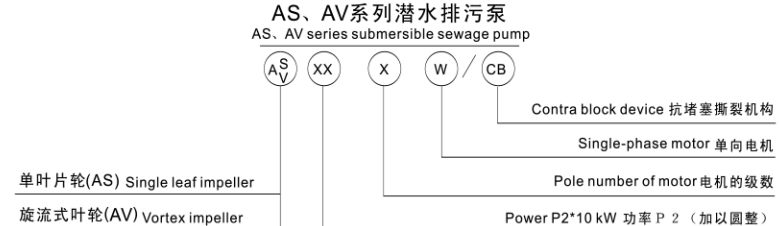
农村沼气、农田灌溉

Be used for agricultural methane, agricultural irrigation.



产品型号说明

Product model description



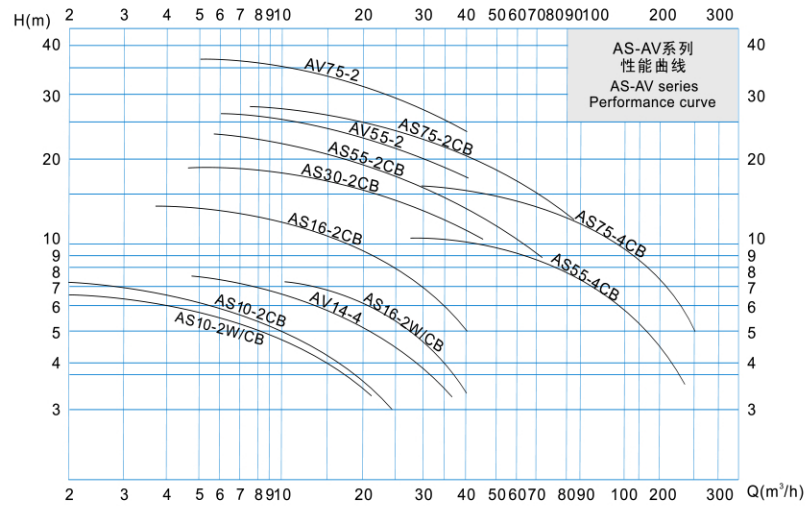
技术性能表

Technology performance data

序号 No.	规格型号 Type	流量 Capacity m ³ /h	扬程 Head H(m)	效率 Eff η (%)	功率 Power (Kw)	转速 Speed n(r/min)	电压 Voltage (v)	电流 Current (A)	口径 Dia.DN (Φmm)	通过颗粒 Through the particles (Φmm)	配用电控柜 Electric control cabinet for distribution	自耦装置型号 Mode of auto-coupling system	重量 Weight (kg)
1	AS10-2CB	15	4.5	25.5	1.0	2850	380	2.9	80	30	QC系列	80GAK	30
2	AS16-2CB	29	7.6	46.5	1.6	2850	380	3.7	80	30		80GAK	33
3	AS30-2CB	42	11	45	2.9	2850	380	6.4	80	30		80GAK	40
4	AS55-2CB	65	12	55	5.5	2900	380	11.1	100	50		100GAK	165
5	AS55-4CB	100	7.5	59.8	5.5	1450	380	11.6	150	80		150GAK	180
6	AS75-2CB	85	13	57.9	7.5	2900	380	15.0	100	50		100GAK	185
7	AS75-4CB	145	10	62	7.5	1450	380	15.4	150	80		150GAK	200
8	AV14-4	22	5.8	36.5	1.4	1450	380	3.3	80	30		80GAK	33
9	AV55-2	30	20	52.4	5.5	2900	380	11.1	100	50		100GAK	150
10	AV75-2	30	25	52.4	7.5	2900	380	15.0	100	50		100GAK	150
11	AS10-2W-CB	15	4	30	0.8	2850	220	5.65	80	30		80GAK	30
12	AS16-2W/CB	22	6	29.5	1.2	2850	220	7.5	80	30		80GAK	33

性能曲线

Performance curve



安装方法

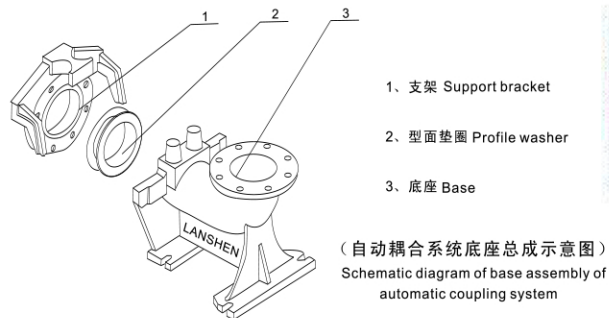
Mounting method

本公司生产的该系列潜水排污泵，机泵同轴结构紧凑，效率高，安装维护方便，运行经济，适应性强，其安装方式有固定湿式安装，移动式安装（可带支架固定式安装。）

The monoblock-designed submersible sewage pumps, are featured with characteristics of compact volume, high efficiency, convenient maintenance, economical operating and strong adaptability, the installation mode includes fixed wet mounting, Movable mounting (or fixed type mounting with support bracket)

固定湿式安装 Fixed wet type mounting

采用自动耦合系统，水泵沿导轨下滑到底座，与其进水自动耦合并密封可靠（详见自动耦合装置安装说明书）（图一）。
Adopt automatic coupling device, the water pump can slide to base along the rail and couple with the water inlet automatically and seal reliably (refer to the installation specification of automatic coupling device for details) (diagram 1).



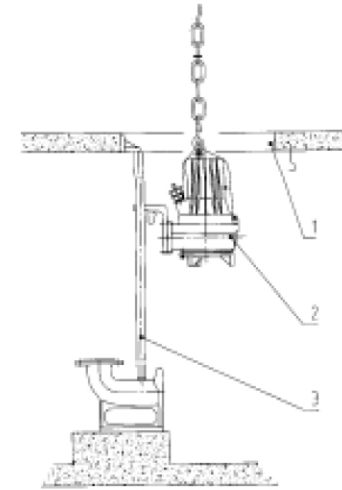
(图一)固定湿式安装
(diagram 1) Fixed wet type mounting

移动式安装 Movable mounting

它以支架支撑，支架不固定在基础上，接上出水软管即可工作，这种方式主要应用于维修，施工的临时排水(限4kw以下泵)。（图三）
It is supported by the support bracket, which is not fixed on the base. It begins to work once wired with delivery hose. This mode is usually applied to maintenance, temporary drainage during construction (only for pumps of 4kw below). (Diagram 3)



(图三)移动式安装
(diagram 3) Movable mounting

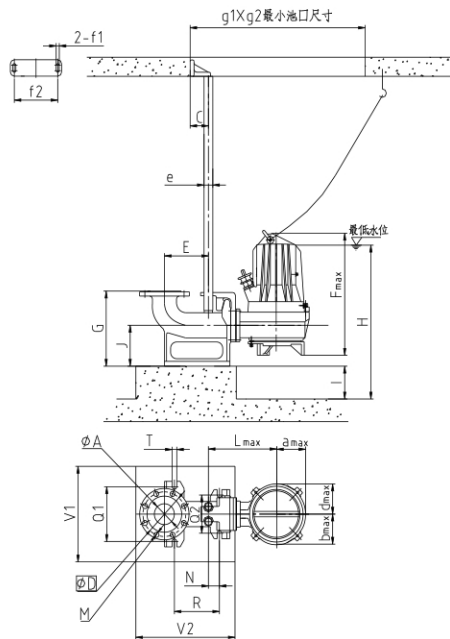


1、池口Pool mouth 2、水泵Water pump 3、导轨Guide rail

(自动耦合装置吊装示意图)
Schematic diagram of hoisting of automatic coupling device

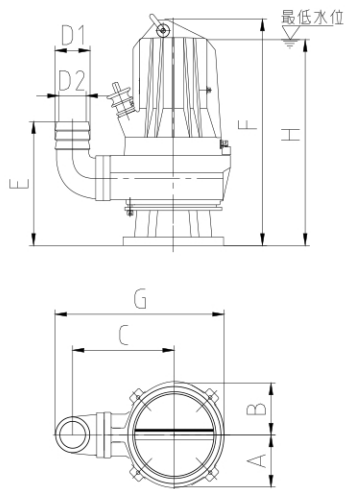
AS、AV系列固定湿式安装系统表及图
AS、AV Series fixed wet type mounting mounting system and picture

自耦	80GAK	100GAK	150GAK
A	80	100	150
C	70	80	85
D	150	180	240
E	168	215	245
Fmax	580	1100	1470
G	275	385	435
H	650	1030	1150
J	150	205	235
Lmax	265	370	395
M	8-Φ18	8-Φ18	8-Φ22
N	42	47	57
Q1/Q2	200/140	220/190	250/200
g1/g2	600/500	900/700	950/750
R	172	237	270
T	4-18	4-18	4-20
amax	146	180	205
bmax	146	200	235
dmax	146	180	205
f1/f2	12/166	12/160	12/160
e	Φ33.5	Φ48	Φ48
V1/V2	450/550	450/550	550/650



外形尺寸
Outling size

型号规格 Spec. & Model	A	B	C	D1	D2	E	F	G	H
AS10-2CB	116	107	200	77	60	260	475	350	440
AS10-2W/CB	116	107	200	77	60	260	475	350	440
AS16-2CB	116	107	200	77	60	260	475	350	440
AS16-2W/CB	116	107	200	77	60	260	475	350	440
AS30-2CB	110	110	225	77	60	265	480	375	440
AV14-4	140	140	230	77	60	215	445	410	410
AS55-2CB	205	150	405	127	100	430	815	630	755
AS75-2CB	205	150	405	127	100	430	815	630	755
AS55-4CB	230	180	440	152	125	505	900	725	850
AS75-4CB	230	180	440	152	125	505	900	725	850
AV55-2	168	168	400	127	100	440	820	625	760
AV75-2	168	168	400	127	100	440	820	625	760



WQ型潜水排污泵

WQ Type Submersible Sewage Pump

产品简介

Product profile

WQ型潜水排污泵是我公司在吸收德国著名制泵公司先进技术的基础上研究开发的产品，其技术起点高，节能效果明显，配套性强、适用性广，被原国家机械委列为重点引进消化产品，并通过了出口质量认可和CE认证。投放市场以后，以其独特的功能，可靠的质量，受到广大用户的欢迎与好评。除批量返销国际市场还被许多国家重点建设工程选为替代进口产品。95年被国家科委列为“火炬计划”发展项目，97年被定为建设部推荐产品和国家科委推广产品。

WQ type submersible sewage pumps are developed on the basis of adsorbing advanced technology from famous pump manufacturing company in German, with advantages of high technological starting point, obvious energy saving capability, strong matching capability, wide applicability and so on, are listed as key introduced and digested products by former State Committee of Machinery Industry, and have passed the export quality certification and CE certification. After put into the market, the products win favorable comments due to their unique functions and reliable quality, not only are far resold to international market in batch, but also are selected by many national key construction projects to substitute for imported products. This type of products had the honor to be listed as developing item of “Torch Program” by State Science and Technology Commission in 1995, as recommended products by Ministry of Construction, and as promotion products by State Science and Technology Commission in 1997.



产品特点及用途

Product features and purposes

- 1、WQ型潜水排污泵采用大通道抗堵塞水利部件的设计，能有效通过直径125MM固定颗粒。
- 2、电机采用水套式循环水冷却系统，能保证电泵在无水(干式)状态下可靠运行。
- 3、独有的电机防凝露装置，能自动地对电机进行除湿，确保电机绝缘在高温环境下保证300M以上，使电机正常、可靠运行。
- 4、采用自动耦合系统，安装简便，无需修建泵房，可减少大量工程费用，降低运行成本。
- 5、自动保护系统具有多功能的运行显示，能对各种运行状态进行集中控制，并进行有效的保护。
- 6、WQ型潜水排污泵广泛用于市政工程、工厂、商业、医院、宾馆、住宅区带固体颗粒及长纤维的污水、废水、雨水排放以及给水和农田灌溉。

- 1、WQ type submersible sewage pumps adopt large-channel anti-block hydraulic power parts, which allow solid particles of dia. 125MM to pass smoothly.
- 2、The electrical motor adopts water jacket type circulated water cooling system to make sure that the electric pump can work reliably under dry condition.
- 3、Unique condensation-proof device of motor, removes dampness from the motor automatically to keep its insulation at 300M above at high temperature, make sure that it can work normally and reliably.
- 4、Automatic coupling system, simple installation, need not pump house, which cut down the construction cost and running cost sharply.
- 5、The automatic protection system has multifunctional running display, which can make centralized control to every running state and protect it effectively.
- 6、WQ type submersible sewage pumps can be applied to municipal engineering, factory, commerce, hospital, hotel, residential area and so on, used to drain sewage, waste water or rainwater that contain solid particles or long fibers, also can be used to supply water and irrigate agricultural land.

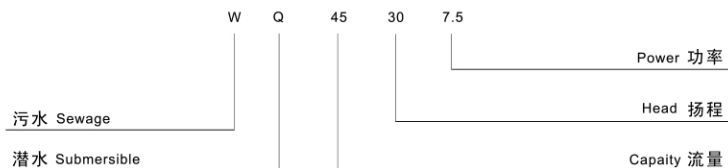
使用范围及使用条件

Range of use and service condition

Ph: 5~9。水温不超过40℃。(特殊使用介质如: 高温、轻微腐蚀性介质、海水等可特殊定制)
Ph: 5~9. Water temperature ≤40℃.
(WaterSpecial working media such as: high temperature, slightly corrosive media, sea water and others can be customized.)

WQ系列潜水排污泵

WQ series submersible sewage pump



结构说明图

Structure description diagram

本系列潜水排污泵，引进和吸收国外先进技术，结构合理，性能优越。鼠笼式电动运行方式S1，定子绝缘等级F（155℃），并具有防凝露装置，每相装有超载保护元件。

如采用特有的“蓝深LSK-1系列”水泵及水处理设备专用控制柜，可确保设备经久耐用、稳定可靠运行。（详见后页）

This series submersible sewage pump adopts advanced technology from foreign countries, has reasonable structure and superior performance. Operating mode of squirrel cage motor is S1, stator insulation class is F (155°C). With condensation-resistant device, and there is overload protection element for each phase.

The special "Lanshen LSK-1 series" water pump and water treatment equipment special control cabinet are adopted to ensure durable equipment and stable and reliable operation. (refer to next pages for details)

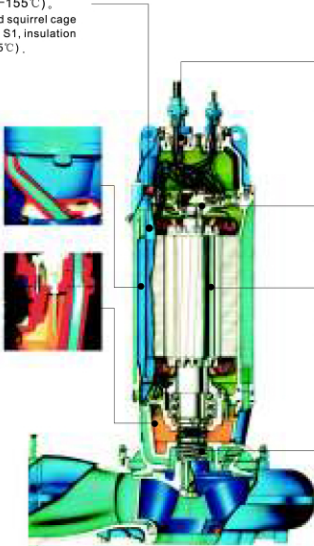
防水压力密封的鼠笼式电机，运行方式为S1，绝缘等级F(适用于155℃)。
Waterproof pressure sealed squirrel cage motor, with operating mode S1, insulation class F (applicable for 155°C).

最佳电机开式冷却系统。冷却介质可以充满冷却套并自动循环，热量可以毫无困难的疏散。

Optimal motor open cooling system. Cooling medium is able to fill up the cooling jacket and cycle automatically, and the heat can be dispersed easily.

按照蓝深潜水泵标准，油腔中充满润滑油，在电机和水力部件之间的安全区装有DI传感器监控渗漏现象，并发出检修批示。

According to the standard of Lanshen submersible pump, oil pocket is full of lubricating oil, and there is a DI sensor mounted in the safety zone between motor and hydraulic power components used to monitor the leakage situation and send out overhaul instructions.



独立防水压力密封接线室。防水电缆进线有防拉紧，防缠绕保护及每根走线密封。
Independent waterproof pressure sealed wiring chamber. Each of the waterproof incoming cables is sealed off, and has functions of anti-tension and anti-intertwist.

电机转轴上下端嵌入终身润滑免维护的轴承内。90kW以上可根据需要增加单独的温度传感器。
The motor shaft lubrication and lifelong maintenance free embedded within the bearings. According to the need to increase 90kW above the temperature sensor alone.

与电机转子一起进行平衡检测的不锈钢转轴，轴端密封装置，使轴不受抽送介质腐蚀。轴悬伸设计的短，减少泵体振动、延长机械密封和轴承的使用寿命，运行噪音降低。

The stainless steel revolution axis that proceeds balance sense together with motor rotor, the axis end should be seal arranged to against corrosion of pumping medium. The axis overhang is designed short to reduce pump vibration and prolong mechanical sealing life as well as service life of bearing, and the noise also will be reduced.

电机和水力部件之间设有两道油润滑密封，介质端为碳化硅环，耐温、耐冲击、耐磨损能力出色，使用寿命长。这种密封结构已在蓝深使用了多年，已被证实比其它材料的结构更为优越。
There are two oil lubricating sealing ways between the motor and hydraulic part. It takes silicon carbide ring for the medium end, with advantages of temperature-proof, shockproof, strong wearproof, long service life. This hermetically sealed construction has been applied for many years in Lanshen Company and has been approved to be superior to other structures of other material.

叶轮设计

Impeller design

潜水排污泵在总体结构和水力模型设计上大胆创新，运用CFD流场分析技术、有限元分析法等先进设计理念和方法。叶轮进行动平衡检测而震动很少，确保运行平稳。叶轮单独加工以符合规定的工作点，以其最佳的流道和速度，最大效率输送流体。

bravely innovates submersible sewage pump on the aspect of general structure and hydraulic model design, and employs CFD flow field analysis technology and finite element analysis. The impeller vibrates little during performing balance inspection, so that the pump can run stably. The impeller is processed separately to reach the specified working Points, so as to carry the liquid with the best flowing way and speed and max efficiency.



大通道叶轮 Large-channel impeller

用于输送含有大固体颗粒的废水
大通道叶轮，运行于蜗壳中，流道的形状及尺寸使泵不易堵塞，因此，用作泵送含有大固体颗粒的废水是理想的。

Be used for carrying the wastewater with large solid particle
Large-channel impeller runs in the volute casing. The shape and size of channel doesn't bring the jam, therefore, it is the ideal that the impeller is acted as pump to carry the waste water with large solid particle



旋涡式叶轮 Peripheral impeller

适用于含固粒的废水
旋涡式叶轮泵水过程由叶轮引发快速旋转的涡流，并使液体压力升高。液体中大多数固体颗粒不会进入与叶轮相接触，大大减少了磨损，提高了水泵的寿命。

Be suitable for waste water with solid particle
The water process of peripheral impeller that is the impeller triggers the vortex flow in rapid rotating and makes hydraulic pressure rise.



多叶片叶轮 Multi-blade impeller

叶轮为多叶片式，高效输水、不会堵塞。
The impeller is designed into multi-blade type, can carry water effectively without blocking.

技术性能表

Technology performance data

规格型号 Spec.&Model	流量 Capacity Q(m³/h)	扬程 Head H(m)	转速 Speed (r/min)	泵效率 Eff n(%)	配套功率 Power P2(Kw)	出水口径 Dia DM(Φ mm)	对应机座号 Corresponding frame No.	自耦装置型号 Mode of autoco- -upling system	通过颗粒 Through the particles (Φ mm)	重量 Weight (kg)
WQ10-10-1	10	10	2900	44	1	50	M80	50GAK	25	29
WQ15-7-1	15	7	2900	47	1	50	M80	50GAK	25	29
WQ10-15-1.5	10	15	2900	44	1.5	50	M80	50GAK	25	32
WQ15-10-1.5	15	10	2900	47	1.5	50	M80	50GAK	25	32
WQ25-8-1.5	25	8	2900	50.6	1.5	50	M80	50GAK	25	32
WQ15-20-2.2	15	20	2900	47	2.2	50	M100	50GAK	25	45
WQ25-14-2.2	25	14	2900	50.6	2.2	50	M100	50GAK	25	45
WQ40-10-2.2	40	10	2900	54	2.2	50	M100	50GAK	25	45
WQ20-22-3	20	22	2900	49.2	3	50	M100	50GAK	25	45
WQ30-16-3	30	16	2900	52.4	3	50	M100	50GAK	25	45
WQ40-12-3	40	12	2900	54	3	50	M100	50GAK	25	45
WQ100-5-3	100	5	2900	55	3	100	M100	100GAK	50	45
WQ10-28-4	10	28	2900	40.3	4	80	M112	80GAK	40	75
WQ20-25-4	20	25	2900	49.2	4	80	M112	80GAK	40	75
WQ30-18-4	30	18	2900	52.4	4	80	M112	80GAK	40	75
WQ40-15-4	40	15	2900	54	4	80	M112	80GAK	40	75
WQ50-14-4	50	14	2900	54.6	4	80	M112	80GAK	40	75
WQ60-13-4	60	13	2900	57	4	80	M112	80GAK	40	75
WQ70-10-4	70	10	2900	53.7	4	80	M112	80GAK	40	75
WQ140-5-4	140	5	980	62	4	150	M112G	150GAK	70	100
WQ160-4-4	160	4	980	65	4	150	M112G	150GAK	70	100
WQ180-3-4	180	3	980	66	4	150	M112G	150GAK	70	100
WQ200-2.5-4	200	2.5	980	57.4	4	150	M112G	150GAK	70	100
WQ250-2-4	250	2	980	60	4	150	M112G	150GAK	70	100
WQ10-32-5.5	10	32	1470	48.5	5.5	50	M112G	50GAK(A)	25	175
WQ25-30-5.5	25	30	1470	52	5.5	50	M112G	50GAK(A)	25	175
WQ35-25-5.5	35	25	1470	51.4	5.5	50	M112G	50GAK(A)	25	175
WQ30-21-5.5	30	21	1470	52.4	5.5	100	M112G	100GAK	50	175
WQ45-18-5.5	45	18	1470	55	5.5	100	M112G	100GAK	50	175
WQ65-15-5.5	65	15	1470	55	5.5	100	M112G	100GAK	50	175
WQ70-14-5.5	70	14	1470	57.9	5.5	100	M112G	100GAK	50	175
WQ80-13-5.5	80	13	1470	56.1	5.5	100	M112G	100GAK	50	175
WQ100-8-5.5	100	8	1470	59.8	5.5	150	M112G	150GAK	70	175
WQ115-7-5.5	115	7	1470	58.9	5.5	150	M112G	150GAK	70	175
WQ170-6-5.5	170	6	1470	69.9	5.5	200	M112G	200GAK	100	190

技术性能表

Technology performance data

规格型号 Spec.&Model	流量 Capacity Q(m³/h)	扬程 Head H(m)	转速 Speed (r/min)	泵效率 Eff n(%)	配套功率 Power P2(Kw)	出水口径 Dia DM(Φ mm)	对应机座号 Corresponding frame No.	自耦装置型号 Mode of autoco- -upling system	通过颗粒 Through the particles (Φ mm)	重量 Weight (kg)
WQ200-5-5.5	200	5	1470	72	5.5	200	M112G	200GAK	100	190
WQ10-48-7.5	10	48	2900	47.4	7.5	80	M112G	80GAK(A)	40	200
WQ20-40-7.5	20	40	2900	54.5	7.5	80	M112G	80GAK(A)	40	200
WQ30-35-7.5	30	35	2900	50.9	7.5	80	M112G	80GAK(A)	40	200
WQ45-30-7.5	45	30	1470	52.4	7.5	100	M112G	100GAK	50	200
WQ50-27-7.5	50	27	1470	55	7.5	100	M112G	100GAK	50	200
WQ60-25-7.5	60	25	1470	55.3	7.5	100	M112G	100GAK	50	200
WQ70-20-7.5	70	20	1470	57.9	7.5	100	M112G	100GAK	50	200
WQ100-15-7.5	110	15	1470	69	7.5	100	M112G	100GAK	50	200
WQ120-13-7.5	120	13	1470	69	7.5	100	M112G	100GAK	50	200
WQ140-9-7.5	140	9	1470	61.2	7.5	150	M112G	150GAK	70	200
WQ150-8-7.5	150	8	1470	62	7.5	150	M112G	150GAK	70	200
WQ180-7-7.5	180	7	1470	61.6	7.5	150	M112G	150GAK	70	200
WQ200-8-7.5	200	8	1470	62.7	7.5	200	M112G	200GAK	100	220
WQ210-6-7.5	210	6	1470	65	7.5	200	M112G	200GAK	100	220
WQ250-5-7.5	250	5	1470	63.3	7.5	200	M112G	200GAK	100	220
WQ45-32-11	45	32	1470	55	11	100	M160A(M132G)	100GAK	50	280
WQ70-22-11	70	22	1470	57.8	11	100	M160A(M132G)	100GAK	50	280
WQ100-16-11	100	16	1470	59.8	11	150	M160A(M132G)	150GAK	70	280
WQ150-10-11	150	10	1470	62	11	150	M160A(M132G)	150GAK	70	280
WQ250-9-11	250	9	1470	61.5	11	200	M160A(M132G)	200GAK	70	280
WQ300-7-11	300	7	1470	64	11	200	M160A(M132G)	200GAK	70	280
WQ400-6-11	400	6	1470	62	11	200	M160A(M132G)	200GAK	70	280
WQ500-5-11	500	5	1470	65	11	250	M160A(M132G)	250GAK	100	300
WQ550-3-11	500	3	740	68	11	250	M180A(M160G)	250GAK	100	500
WQ800-2-10	800	2	490	68	10	400	M180A(M160G)	400GAK	125	800
WQ70-32-15	70	32	1470	57.9	15	100	M160A(M132G)	100GAK	50	280
WQ100-22-15	100	22	1470	59.8	15	100	M160A(M132G)	100GAK	50	280
WQ150-17-15	150	17	1470	62	15	150	M160A(M132G)	150GAK	70	280
WQ250-13-15	250	13	1470	65	15	150	M160A(M132G)	150GAK	70	280
WQ300-10-15	300	10	1470	66	15	200	M160A(M132G)	200GAK	70	280
WQ400-9-15	400	9	1470	68	15	200	M160A(M132G)	200GAK	70	280
WQ450-8-15	450	8	1470	67	15	200	M160A(M132G)	200GAK	70	280
WQ500-7-15	500	7	1470	70.5	15	250	M160A(M132G)	250GAK	100	320
WQ550-6-15	550	6	1470	72	15	250	M160A(M132G)	250GAK	100	320

技术性能表

Technology performance data

规格型号 Spec.&Model	流量 Capacity Q(m³/h)	扬程 Head H(m)	转速 Speed n(r/min)	泵效率 Eff n(%)	配套功率 Power P2(Kw)	出水口径 Dia DM(Φ mm)	对应机座号 Corresponding frame No.	自耦装置型号 Mode of autoco- -upling system	通过颗粒 Through the particles (Φ mm)	重量 Weight (kg)
WQ50-36-18.5	50	36	1470	61	18.5	100	M180A(M160G)	100GAK	50	450
WQ80-34-18.5	80	34	1470	63.5	18.5	100	M180A(M160G)	100GAK	50	450
WQ100-30-18.5	100	30	1470	64.8	18.5	100	M180A(M160G)	100GAK	50	450
WQ150-18-18.5	150	18	1470	67	18.5	150	M180A(M160G)	150GAK	70	450
WQ250-15-18.5	250	15	1470	67	18.5	150	M180A(M160G)	150GAK	70	450
WQ300-11-18.5	300	11	1470	70.5	18.5	150	M180A(M160G)	150GAK	70	450
WQ400-10-18.5	400	10	1470	66	18.5	200	M180A(M160G)	200GAK	100	450
WQ700-6-18.5	700	6	740	75	18.5	300	M225A	300GAK	150	750
WQ800-4.5-18.5	800	4.5	740	78	18.5	300	M225A	300GAK	150	750
WQ50-44-22	50	44	1470	61.5	22	100	M180A(M160G)	100GAK	50	500
WQ80-38-22	80	38	1470	63.5	22	100	M180A(M160G)	100GAK	50	500
WQ100-35-22	100	35	1470	64.8	22	100	M180A(M160G)	100GAK	50	500
WQ150-22-22	150	22	1470	67	22	150	M180A(M160G)	150GAK	70	500
WQ250-17-22	250	17	1470	70	22	150	M180A(M160G)	150GAK	70	500
WQ400-13-22	400	13	1470	70.5	22	200	M180A(M160G)	200GAK	70	500
WQ500-9-22	500	9	1470	66	22	250	M180A(M160G)	250GAK	100	500
WQ600-7-22	600	7	1470	68	22	250	M180A(M160G)	250GAK	100	500
WQ150-30-30	150	30	1470	67	30	150	M225A	150GAK	70	800
WQ250-22-30	250	22	980	70	30	150	M225A	150GAK	70	800
WQ300-18-30	300	18	980	70.5	30	150	M225A	150GAK	70	800
WQ400-16-30	400	16	1470	67	30	250	M225A	250GAK	100	800
WQ600-12-30	600	12	1470	75	30	250	M225A	250GAK	100	800
WQ800-7-30	800	7	980	70	30	250	M225A	250GAK	100	800
WQ1100-6-30	1100	6	980	70	30	300	M225A	300GAK	150	800
WQ150-35-37	150	35	1470	67	37	150	M225A	150GAK	70	800
WQ250-26-37	250	26	1470	70	37	150	M225A	150GAK	70	800
WQ300-22-37	300	22	1470	70.5	37	150	M225A	150GAK	70	800
WQ400-20-37	400	20	1470	77	37	200	M225A	200GAK	70	800
WQ600-15-37	600	15	1470	74	37	250	M225A	250GAK	100	800
WQ720-12-37	720	12	1470	75	37	250	M225A	250GAK	100	800
WQ1100-8.5-37	1100	8.5	980	67.5	37	300	M225A	300GAK	150	800
WQ1200-7-37	1200	7	980	69	37	300	M225A	300GAK	150	800
WQ250-30-45	250	30	1470	70	45	150	M225A	150GAK	70	800

根据客户要求, 可做特殊设计

技术性能表

Technology performance data

规格型号 Spec.&Model	流量 Capacity Q(m³/h)	扬程 Head H(m)	转速 Speed n(r/min)	泵效率 Eff n(%)	配套功率 Power P2(Kw)	出水口径 Dia DM(Φ mm)	对应机座号 Corresponding frame No.	自耦装置型号 Mode of autoco- -upling system	通过颗粒 Through the particles (Φ mm)	重量 Weight (kg)
WQ300-27-45	300	27	1470	70.5	45	150	M225A	150GAK	70	800
WQ400-26-45	400	26	1470	76	45	200	M225A	200GAK	70	800
WQ500-22-45	500	22	1470	77	45	200	M225A	200GAK	70	800
WQ600-20-45	600	20	1470	80	45	250	M225A	250GAK	100	800
WQ720-16-45	720	16	1470	79	45	250	M225A	250GAK	100	800
WQ950-11-45	950	11	1470	74.5	45	300	M225A	300GAK	150	800
WQ1000-9.5-45	1000	9.5	1470	76	45	300	M225A	300GAK	150	800
WQ1200-6-45	1200	6	740	67.5	45	400	M280A	400GAK	125	1500
WQ1800-5-45	1800	5	740	70	45	400	M280A	400GAK	125	1500
WQ150-45-55	150	45	1470	68	55	200	M225A(M225G)	200GAK	70	1000
WQ250-40-55	250	40	1470	70	55	200	M225A(M225G)	200GAK	70	1000
WQ300-36-55	300	36	1470	70.5	55	200	M225A(M225G)	200GAK	70	1000
WQ500-26-55	500	26	1470	71.5	55	250	M225A(M225G)	250GAK	100	1000
WQ600-24-55	600	24	1470	74	55	250	M225A(M225G)	250GAK	100	1000
WQ700-22-55	700	22	1470	72.5	55	250	M225A(M225G)	250GAK	100	1000
WQ1000-13-55	1000	13	980	76	55	300	M250A(M250G)	300GAK	100	1250
WQ1300-10-55	1300	10	980	77.5	55	300	M250A(M250G)	300GAK	100	1250
WQ1600-8.5-55	1600	8.5	980	74.5	55	400	M280A	400GAK	125	1500
WQ1700-8-55	1700	8	980	75	55	400	M280A	400GAK	125	1500
WQ1800-7-55	1800	7	980	74	55	400	M280A	400GAK	125	1500
WQ400-30-75	400	30	1470	63.5	75	300	M250A(M250G)	300GAK	70	1300
WQ600-26-75	600	26	1470	69	75	300	M250A(M250G)	300GAK	125	1300
WQ700-24-75	700	24	1470	70.5	75	300	M250A(M250G)	300GAK	125	1300
WQ950-20-75	950	20	1470	72	75	300	M250A(M250G)	300GAK	125	1300
WQ1000-16-75	1000	16	980	76	75	300	M250A(M250G)	300GAK	125	1300
WQ1300-12-75	1300	12	980	77.5	75	300	M250A(M250G)	300GAK	125	1300
WQ1600-10-75	1600	10	980	72	75	400	M280A(M280G)	400GAK	125	1550
WQ2000-8-75	2000	8	740	79	75	400	M315	400GAK	125	2300
WQ2700-7-75	2700	7	740	74	75	500	M315	500GAK	125	2500
WQ400-40-90	400	40	1470	63.5	90	300	M250A(M250G)	300GAK	70	1350
WQ600-30-90	600	30	1470	70	90	300	M250A(M250G)	300GAK	70	1350
WQ800-24-90	800	24	1470	75	90	300	M250A(M250G)	300GAK	125	1350
WQ1000-22-90	1000	22	1470	74	90	300	M250A(M250G)	300GAK	125	1350

根据客户要求, 可做特殊设计

技术性能表

Technology performance data

规格型号 Spec.&Model	流量 Capacity Q(m³/h)	扬程 Head H(m)	转速 Speed n(r/min)	泵效率 Eff n(%)	配套功率 Power P2(Kw)	出水口径 Dia DM(Φ mm)	对应机座号 Corresponding frame No.	自耦装置型号 Mode of autoco- -upling system	通过颗粒 Through the particles (Φ mm)	重量 Weight (kg)
WQ1300-16-90	1300	16	980	77.5	90	400	M280A(M280G)	400GAK	125	1800
WQ1600-12-90	1600	12	980	78	90	400	M280A(M280G)	400GAK	125	1800
WQ2000-10-90	2000	10	980	79	90	400	M280A(M280G)	400GAK	125	1800
WQ3000-6-90	3000	6	740	81	90	500	M315	500GAK	125	2500
WQ650-37-110	650	37	1470	74.3	110	250	M280A(M280G)	250GAK	100	1850
WQ800-30-110	800	30	1470	75	110	250	M280A(M280G)	250GAK	100	1850
WQ1300-20-110	1300	20	980	77.5	110	400	M280A(M280G)	400GAK	125	1900
WQ1600-16-110	1600	16	980	78	110	400	M280A(M280G)	400GAK	125	1900
WQ2000-13.5-110	2000	13.5	980	79	110	400	M280A(M280G)	400GAK	125	1900
WQ2500-10-110	2500	10	740	80	110	500	M315	500GAK	125	2500
WQ3000-8-110	3000	8	740	81	110	500	M315	500GAK	125	2500
WQ4000-6-110	4000	6	740	81.5	110	500	M315	500GAK	125	2500
WQ650-45-132	650	45	1470	74.3	132	250	M280A(M280G)	250GAK	100	1950
WQ800-38-132	800	38	1470	75	132	250	M280A(M280G)	250GAK	100	1950
WQ1000-30-132	1000	30	1470	76	132	250	M280A(M280G)	250GAK	100	1950
WQ1300-24-132	1300	24	980	77.5	132	400	M315	400GAK	125	2300
WQ1600-20-132	1600	20	980	78	132	400	M315	400GAK	125	2300
WQ2000-16-132	2000	16	980	79	132	400	M315	400GAK	125	2300
WQ2500-13-132	2500	13	740	80	132	500	M315	500GAK	125	2500
WQ3000-10-132	3000	10	740	81	132	500	M315	500GAK	125	2500
WQ650-50-160	650	50	1470	74.3	160	250	M315	250GAK(A)	100	2100
WQ800-42-160	800	42	1470	75	160	250	M315	250GAK(A)	100	2100
WQ1000-35-160	1000	35	1470	76	160	300	M315	300GAK(A)	100	2100
WQ1300-26-160	1300	26	980	77.5	160	400	M315	400GAK	125	3550
WQ1600-22-160	1600	22	980	77.5	160	400	M315	400GAK	125	3550
WQ2000-18-160	2000	18	980	79	160	400	M315	400GAK	125	3550
WQ2500-14.5-160	2500	14.5	980	80	160	500	M315	500GAK	125	3800
WQ3000-13-160	3000	13	980	81	160	500	M315	500GAK	125	3800
WQ500-70-185	500	70	1470	70	185	300	M315	300GAK(A)	60	3900
WQ700-55-185	700	55	1470	74	185	300	M315	300GAK(A)	60	3900
WQ1000-40-185	1000	40	1470	80	185	300	M315	300GAK(A)	125	3900
WQ1300-30-185	1300	30	980	77	185	400	M355	400GAK	125	3900
WQ1600-25-185	1600	25	980	79	185	400	M355	400GAK	125	3900

根据客户要求, 可做特殊设计

技术性能表

Technology performance data

规格型号 Spec.&Model	流量 Capacity Q(m³/h)	扬程 Head H(m)	转速 Speed n(r/min)	泵效率 Eff n(%)	配套功率 Power P2(Kw)	出水口径 Dia DM(Φ mm)	对应机座号 Corresponding frame No.	自耦装置型号 Mode of autoco- -upling system	通过颗粒 Through the particles (Φ mm)	重量 Weight (kg)
WQ2000-20-185	2000	20	980	79	185	500	M355	500GAK	125	3900
WQ3000-14-185	3000	14	980	80	185	500	M355	500GAK	125	3900
WQ4000-10-185	4000	10	740	79	185	600	M355	600GAK	180	3900
WQ500-75-200	500	75	1470	70	200	300	M315	300GAK(A)	60	3950
WQ700-60-200	700	60	1470	74	200	300	M315	300GAK(A)	60	3950
WQ1000-44-200	1000	44	1470	80	200	300	M315	300GAK(A)	125	3950
WQ1300-32-200	1300	32	980	77	200	400	M355	400GAK	125	3950
WQ1600-27-200	1600	27	980	79	200	400	M355	400GAK	125	3950
WQ2000-22-200	2000	22	980	79	200	500	M355	500GAK	125	3950
WQ3000-15-200	3000	15	980	80	200	500	M355	500GAK	125	3950
WQ4000-11-200	4000	11	740	79	200	600	M355	600GAK	180	3950
WQ600-75-220	600	75	1470	72	220	300	M315	300GAK(A)	60	4200
WQ800-60-220	800	60	1470	74	220	300	M315	300GAK(A)	60	4200
WQ1000-46-220	1000	46	1470	76	220	300	M315	300GAK(A)	125	4200
WQ1300-35-220	1300	35	980	77	220	400	M355	400GAK	125	4200
WQ1600-30-220	1600	30	980	79	220	400	M355	400GAK	125	4200
WQ2000-24-220	2000	24	980	79	220	500	M355	500GAK	125	4200
WQ3000-17-220	3000	17	980	80	220	500	M355	500GAK	125	4200
WQ4000-12-220	4000	12	740	80	220	600	M355	600GAK	180	4200
WQ600-80-250	600	80	1470	72	250	300	M355	400GAK	60	4250
WQ800-65-250	800	65	1470	74	250	300	M355	400GAK	60	4250
WQ1000-52-250	1000	52	1470	76	250	300	M355	400GAK	125	4250
WQ1300-40-250	1300	40	980	77	250	400	M355	400GAK	125	4250
WQ1600-35-250	1600	35	980	79	250	400	M355	400GAK	125	4250
WQ2000-28-250	2000	28	980	79	250	500	M355	500GAK	125	4250
WQ2500-26-250	2500	26	980	79	250	500	M355	500GAK	125	4250
WQ3000-20-250	3000	20	980	81	250	500	M355	500GAK	125	4250
WQ4000-15-250	4000	15	740	80	250	600	M355	600GAK	180	4250
WQ700-80-280	700	80	1470	72	280	300	M355	400GAK	60	5200
WQ1000-65-280	1000	65	1470	80	280	400	M355	400GAK	125	5200
WQ1300-50-280	1300	50	1470	81	280	400	M355	400GAK	125	5200
WQ1700-40-280	1700	40	1470	81	280	500	M355	500GAK	125	5200
WQ2400-30-280	2400	30	980	81	280	500	M355	500GAK	125	5200

根据客户要求, 可做特殊设计

技术性能表

Technology performance data

规格型号 Spec.&Model	流量 Capacity Q(m ³ /h)	扬程 Head H(m)	转速 Speed n(r/min)	泵效率 Eff n(%)	配套功率 Power P2(Kw)	出水口径 Dia DM(Φ mm)	对应机座号 Corresponding frame No.	自耦装置型号 Mode of autoco- -upling system	通过颗粒 Through the particles (Φ mm)	重量 Weight (kg)
WQ1300-16-90	1300	16	980	77.5	90	400	M280A(M280G)	400GAK	125	1800
WQ1600-12-90	1600	12	980	78	90	400	M280A(M280G)	400GAK	125	1800
WQ2000-10-90	2000	10	980	79	90	400	M280A(M280G)	400GAK	125	1800
WQ3000-6-90	3000	6	740	81	90	500	M315	500GAK	125	2500
WQ650-37-110	650	37	1470	74.3	110	250	M280A(M280G)	250GAK	100	1850
WQ800-30-110	800	30	1470	75	110	250	M280A(M280G)	250GAK	100	1850
WQ1300-20-110	1300	20	980	77.5	110	400	M280A(M280G)	400GAK	125	1900
WQ1600-16-110	1600	16	980	78	110	400	M280A(M280G)	400GAK	125	1900
WQ2000-13.5-110	2000	13.5	980	79	110	400	M280A(M280G)	400GAK	125	1900
WQ2500-10-110	2500	10	740	80	110	500	M315	500GAK	125	2500
WQ3000-8-110	3000	8	740	81	110	500	M315	500GAK	125	2500
WQ4000-6-110	4000	6	740	81.5	110	500	M315	500GAK	125	2500
WQ650-45-132	650	45	1470	74.3	132	250	M280A(M280G)	250GAK	100	1950
WQ800-38-132	800	38	1470	75	132	250	M280A(M280G)	250GAK	100	1950
WQ1000-30-132	1000	30	1470	76	132	250	M280A(M280G)	250GAK	100	1950
WQ1300-24-132	1300	24	980	77.5	132	400	M315	400GAK	125	2300
WQ1600-20-132	1600	20	980	78	132	400	M315	400GAK	125	2300
WQ2000-16-132	2000	16	980	79	132	400	M315	400GAK	125	2300
WQ2500-13-132	2500	13	740	80	132	500	M315	500GAK	125	2500
WQ3000-10-132	3000	10	740	81	132	500	M315	500GAK	125	2500
WQ650-50-160	650	50	1470	74.3	160	250	M315	250GAK(A)	100	2100
WQ800-42-160	800	42	1470	75	160	250	M315	250GAK(A)	100	2100
WQ1000-35-160	1000	35	1470	76	160	300	M315	300GAK(A)	100	2100
WQ1300-26-160	1300	26	980	77.5	160	400	M315	400GAK	125	3550
WQ1600-22-160	1600	22	980	77.5	160	400	M315	400GAK	125	3550
WQ2000-18-160	2000	18	980	79	160	400	M315	400GAK	125	3550
WQ2500-14.5-160	2500	14.5	980	80	160	500	M315	500GAK	125	3800
WQ3000-13-160	3000	13	980	81	160	500	M315	500GAK	125	3800
WQ500-70-185	500	70	1470	70	185	300	M315	300GAK(A)	60	3900
WQ700-55-185	700	55	1470	74	185	300	M315	300GAK(A)	60	3900
WQ1000-40-185	1000	40	1470	80	185	300	M315	300GAK(A)	125	3900
WQ1300-30-185	1300	30	980	77	185	400	M355	400GAK	125	3900
WQ1600-25-185	1600	25	980	79	185	400	M355	400GAK	125	3900

根据客户要求, 可做特殊设计

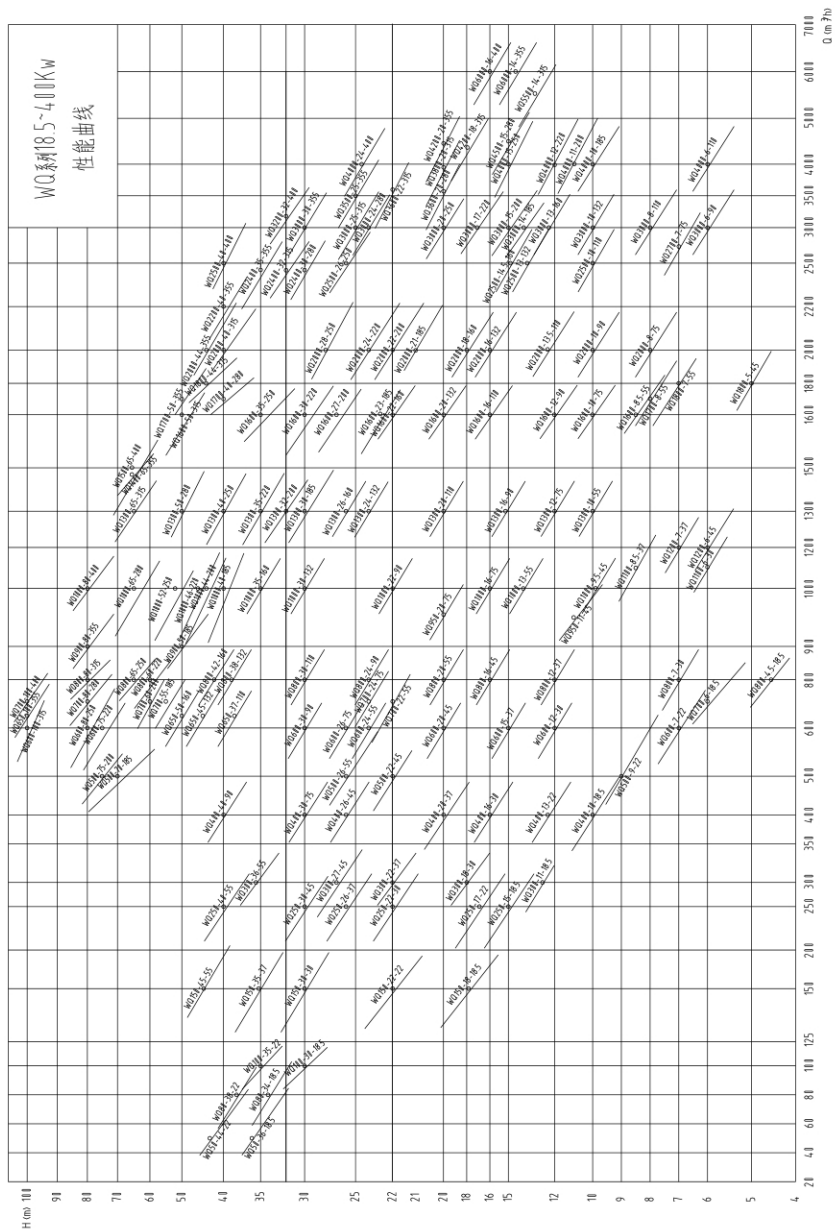
技术性能表

Technology performance data

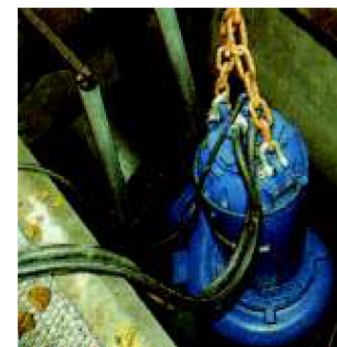
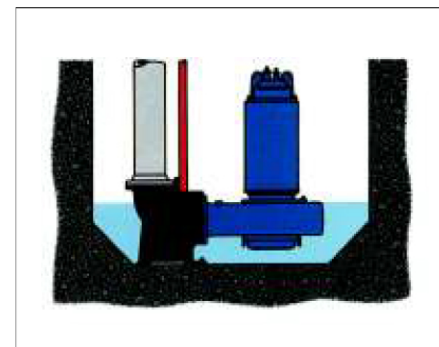
规格型号 Spec.&Model	流量 Capacity Q(m ³ /h)	扬程 Head H(m)	转速 Speed n(r/min)	泵效率 Eff n(%)	配套功率 Power P2(Kw)	出水口径 Dia DM(Φ mm)	对应机座号 Corresponding frame No.	自耦装置型号 Mode of autoco- -upling system	通过颗粒 Through the particles (Φ mm)	重量 Weight (kg)
WQ2000-20-185	2000	20	980	79	185	500	M355	500GAK	125	3900
WQ3000-14-185	3000	14	980	80	185	500	M355	500GAK	125	3900
WQ4000-10-185	4000	10	740	79	185	600	M355	600GAK	180	3900
WQ500-75-200	500	75	1470	70	200	300	M315	300GAK(A)	60	3950
WQ700-60-200	700	60	1470	74	200	300	M315	300GAK(A)	60	3950
WQ1000-44-200	1000	44	1470	80	200	300	M315	300GAK(A)	125	3950
WQ1300-32-200	1300	32	980	77	200	400	M355	400GAK	125	3950
WQ1600-27-200	1600	27	980	79	200	400	M355	400GAK	125	3950
WQ2000-22-200	2000	22	980	79	200	500	M355	500GAK	125	3950
WQ3000-15-200	3000	15	980	80	200	500	M355	500GAK	125	3950
WQ4000-11-200	4000	11	740	79	200	600	M355	600GAK	180	3950
WQ600-75-220	600	75	1470	72	220	300	M315	300GAK(A)	60	4200
WQ800-60-220	800	60	1470	74	220	300	M315	300GAK(A)	60	4200
WQ1000-46-220	1000	46	1470	76	220	300	M315	300GAK(A)	125	4200
WQ1300-35-220	1300	35	980	77	220	400	M355	400GAK	125	4200
WQ1600-30-220	1600	30	980	79	220	400	M355	400GAK	125	4200
WQ2000-24-220	2000	24	980	79	220	500	M355	500GAK	125	4200
WQ3000-17-220	3000	17	980	80	220	500	M355	500GAK	125	4200
WQ4000-12-220	4000	12	740	80	220	600	M355	600GAK	180	4200
WQ600-80-250	600	80	1470	72	250	300	M355	400GAK	60	4250
WQ800-65-250	800	65	1470	74	250	300	M355	400GAK	60	4250
WQ1000-52-250	1000	52	1470	76	250	300	M355	400GAK	125	4250
WQ1300-40-250	1300	40	980	77	250	400	M355	400GAK	125	4250
WQ1600-35-250	1600	35	980	79	250	400	M355	400GAK	125	4250
WQ2000-28-250	2000	28	980	79	250	500	M355	500GAK	125	4250
WQ2500-26-250	2500	26	980	79	250	500	M355	500GAK	125	4250
WQ3000-20-250	3000	20	980	81	250	500	M355	500GAK	125	4250
WQ4000-15-250	4000	15	740	80	250	600	M355	600GAK	180	4250
WQ700-80-280	700	80	1470	72	280	300	M355	400GAK	60	5200
WQ1000-65-280	1000	65	1470	80	280	400	M355	400GAK	125	5200
WQ1300-50-280	1300	50	1470	81	280	400	M355	400GAK	125	5200
WQ1700-40-280	1700	40	1470	81	280	500	M355	500GAK	125	5200
WQ2400-30-280	2400	30	980	81	280	500	M355	500GAK	125	5200

根据客户要求, 可做特殊设计

技术性能图
Technology performance diagram

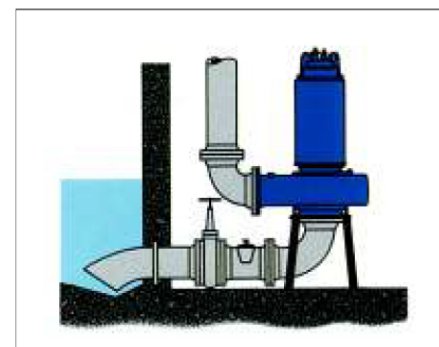


WQ型泵安装方式
WQ Type installation mode



固定湿式安装 Fixed wet type mounting

采用蓝深双导轨自动耦合装置，泵可沿双导轨自动滑到底座上的安装位置，并将出口联接密封好。
Adopt Lanshen dual rail automatic coupling device, the pump can slide to the mounting position on base along this dual rail and seal the outlet connection point automatically.



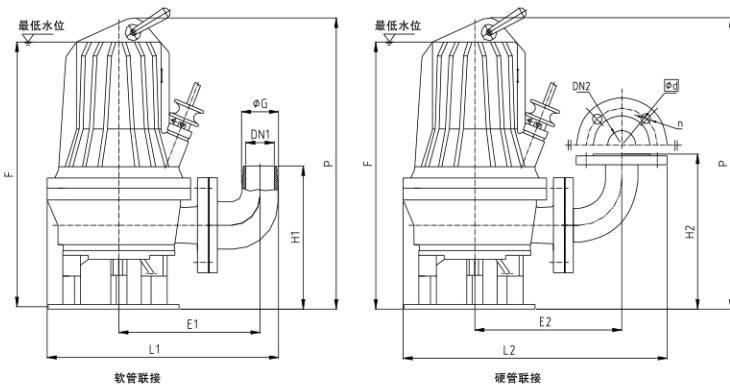
固定干式安装 Fixed dry type mounting

将泵底安装于一个支架上，可进行固定干式安装。适用于单独的收集池和水箱的泵站，可节省空间和安装费用，是对具有长轴泵的老泵站进行改造的良好选择。
Install the pump base on a support bracket in fixed dry type, which is suitable for the pumping station that has individual collecting pool or water tank, saves space and mounting cost, really is the ideal selection for reconstructing old pumping stations that have major axis pumps.

移动式安装及尺寸

Flexible pipe installation dimension

型号 Model	DN1	DN2	G	n	d	L1	L2	H1	H2	E1	E2	F	P
WQ10-10-1	40	50	52	4-Φ18	125	346	413	205	260	185	235	440	475
WQ15-7-1	40	50	52	4-Φ18	125	346	413	205	260	185	235	440	475
WQ10-15-1.5	40	50	52	4-Φ18	125	346	413	205	260	185	235	440	475
WQ15-10-1.5	40	50	52	4-Φ18	125	346	413	205	260	185	235	440	475
WQ25-8-1.5	40	50	52	4-Φ18	125	346	413	205	260	185	235	440	475
WQ15-20-2.2	50	50	65	4-Φ18	125	405	435	250	280	245	250	460	500
WQ25-14-2.2	50	50	65	4-Φ18	125	405	435	250	280	245	250	460	500
WQ40-10-2.2	50	50	65	4-Φ18	125	405	435	250	280	245	250	460	500
WQ20-22-3	50	50	65	4-Φ18	125	405	435	250	280	245	250	460	500
WQ30-16-3	50	50	65	4-Φ18	125	405	435	250	280	245	250	460	500
WQ40-12-3	50	50	65	4-Φ18	125	405	435	250	280	245	250	460	500
WQ100-5-3	100	100	127	8-Φ18	180	540	590	390	345	340	340	500	540
WQ20-25-4	50	80	65	8-Φ18	160	465	575	345	395	290	300	675	725
WQ30-18-4	50	80	65	8-Φ18	160	465	575	345	395	290	300	675	725
WQ40-15-4	50	80	65	8-Φ18	160	465	575	345	395	290	300	675	725
WQ60-13-4	50	80	65	8-Φ18	160	465	575	345	395	290	300	675	725
WQ160-4-4	125	150	152	8-Φ22	240	725	755	505	480	440	455	850	840
WQ180-3-4	125	150	152	8-Φ22	240	700	730	460	430	435	450	790	840
WQ250-2-4	125	150	152	8-Φ22	240	700	730	460	430	435	450	790	840
WQ25-30-5.5	50	50	65	4-Φ18	125	640	660	300	280	400	400	855	915
WQ30-21-5.5	100	100	127	8-Φ18	180	750	800	480	435	460	460	855	915
WQ45-18-5.5	100	100	127	8-Φ18	180	750	800	480	435	460	460	855	915
WQ65-15-5.5	100	100	127	8-Φ18	180	750	800	480	435	460	460	855	915
WQ70-14-5.5	100	100	127	8-Φ18	180	750	800	480	435	460	460	855	915
WQ100-8-5.5	125	150	152	8-Φ22	240	725	755	505	480	440	455	850	900
WQ200-5-5.5	165	200	202	8-Φ22	295	1000	1165	690	660	630	730	920	980
WQ20-40-7.5	60	80	77	8-Φ18	160	460	560	300	280	280	320	855	915
WQ45-30-7.5	100	100	127	8-Φ18	180	750	800	480	435	460	460	855	915
WQ50-27-7.5	100	100	127	8-Φ18	180	750	800	480	435	460	460	855	915
WQ70-20-7.5	100	100	127	8-Φ18	180	750	800	480	435	460	460	855	915
WQ100-13-7.5	100	100	127	8-Φ18	180	780	830	480	435	440	440	855	915
WQ150-8-7.5	125	150	152	8-Φ22	240	725	755	505	480	440	455	850	900
WQ210-6-7.5	165	200	202	8-Φ22	295	1000	1165	690	660	630	730	920	980
WQ45-32-11	100	100	127	8-Φ18	180	830	880	530	480	510	515	1000	1200
WQ70-22-11	100	100	127	8-Φ18	180	830	880	530	480	510	515	1000	1200
WQ100-16-11	125	150	152	8-Φ22	240	850	950	550	555	550	600	1050	1250
WQ150-10-11	125	150	152	8-Φ22	240	850	950	550	555	550	600	1050	1250
WQ500-5-11	—	250	—	12-Φ22	350	—	1160	—	800	—	860	1150	1350
WQ70-32-15	100	100	127	8-Φ18	180	830	880	530	480	510	515	1000	1200
WQ100-22-15	100	100	127	8-Φ18	180	830	880	530	480	510	515	1000	1200
WQ150-17-15	125	150	152	8-Φ22	240	850	950	550	555	550	600	1050	1250
WQ250-13-15	125	150	152	8-Φ22	240	850	950	550	555	550	600	1050	1250
WQ550-6-15	—	250	—	12-Φ22	350	—	1160	—	800	—	860	1150	1350



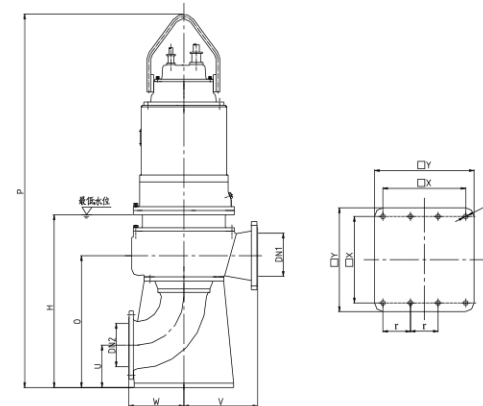
固定干式安装尺寸表

Fixed dry type mounting

口径	DN250		DN300		DN400	
	M280A (M280G)	M315	M250A (M250G)	M315	M280A	M280A (M280G)
机座号						
最小池口尺寸	1700 × 1300	1700 × 1300	1600 × 1200	1700 × 1300	1900 × 1400	1900 × 1400
O*	853	853	880	835	950	1050
H*	1100	1100	1100	1000	1100	1100
P*	2800	3300	2700	3200	2900	3100
U*	295	295	295	295	320	350
V*	523	523	525	570	650	700
W*	360	360	458	520	478	600
X*	680	680	680	680	680	900
Y*	800	800	800	800	800	1000
r*	0	0	0	0	240	300
e*	4-Φ32	4-Φ32	4-Φ32	4-Φ32	8-Φ32	8-Φ32
DN1	250	250	300	300	400	400
DN2	250	250	300	300	400	400

口径	DN400		DN500		DN600
	M315	M355	M315	M355	M355
机座号					
最小池口尺寸	1900 × 1400	2250 × 1700	2150 × 1700	2250 × 1700	
O*	1050	1100	1160	1100	见 我 公 司 详 图
H*	1300	1400	1500	1500	
P*	3400	3700	3600	3700	
U*	350	450	450	450	
V*	700	870	800	750	
W*	600	650	650	650	
X*	900	1200	1200	1200	
Y*	1000	1400	1400	1400	
r*	300	400	400	400	
e*	8-Φ32	8-Φ34	8-Φ34	8-Φ34	
DN1	400	400	500	500	
DN2	400	400	500	500	

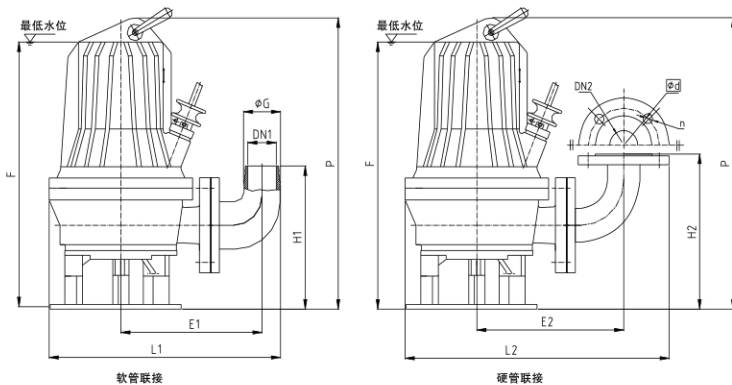
*为参考尺寸，订货时需根据原型确认。 This dimension is only for reference, please confirm it when placing the order.



移动式安装及尺寸

Flexible pipe installation dimension

型号 Model	DN1	DN2	G	n	d	L1	L2	H1	H2	E1	E2	F	P
WQ10-10-1	40	50	52	4-Φ18	125	346	413	205	260	185	235	440	475
WQ15-7-1	40	50	52	4-Φ18	125	346	413	205	260	185	235	440	475
WQ10-15-1.5	40	50	52	4-Φ18	125	346	413	205	260	185	235	440	475
WQ15-10-1.5	40	50	52	4-Φ18	125	346	413	205	260	185	235	440	475
WQ25-8-1.5	40	50	52	4-Φ18	125	346	413	205	260	185	235	440	475
WQ15-20-2.2	50	50	65	4-Φ18	125	405	435	250	280	245	250	460	500
WQ25-14-2.2	50	50	65	4-Φ18	125	405	435	250	280	245	250	460	500
WQ40-10-2.2	50	50	65	4-Φ18	125	405	435	250	280	245	250	460	500
WQ20-22-3	50	50	65	4-Φ18	125	405	435	250	280	245	250	460	500
WQ30-16-3	50	50	65	4-Φ18	125	405	435	250	280	245	250	460	500
WQ40-12-3	50	50	65	4-Φ18	125	405	435	250	280	245	250	460	500
WQ100-5-3	100	100	127	8-Φ18	180	540	590	390	345	340	340	500	540
WQ20-25-4	50	80	65	8-Φ18	160	465	575	345	395	290	300	675	725
WQ30-18-4	50	80	65	8-Φ18	160	465	575	345	395	290	300	675	725
WQ40-15-4	50	80	65	8-Φ18	160	465	575	345	395	290	300	675	725
WQ60-13-4	50	80	65	8-Φ18	160	465	575	345	395	290	300	675	725
WQ160-4-4	125	150	152	8-Φ22	240	725	755	505	480	440	455	850	840
WQ180-3-4	125	150	152	8-Φ22	240	700	730	460	430	435	450	790	840
WQ250-2-4	125	150	152	8-Φ22	240	700	730	460	430	435	450	790	840
WQ25-30-5.5	50	50	65	4-Φ18	125	640	660	300	280	400	400	855	915
WQ30-21-5.5	100	100	127	8-Φ18	180	750	800	480	435	460	460	855	915
WQ45-18-5.5	100	100	127	8-Φ18	180	750	800	480	435	460	460	855	915
WQ65-15-5.5	100	100	127	8-Φ18	180	750	800	480	435	460	460	855	915
WQ70-14-5.5	100	100	127	8-Φ18	180	750	800	480	435	460	460	855	915
WQ100-8-5.5	125	150	152	8-Φ22	240	725	755	505	480	440	455	850	900
WQ200-5-5.5	165	200	202	8-Φ22	295	1000	1165	690	660	630	730	920	980
WQ20-40-7.5	60	80	77	8-Φ18	160	460	560	300	280	280	320	855	915
WQ45-30-7.5	100	100	127	8-Φ18	180	750	800	480	435	460	460	855	915
WQ50-27-7.5	100	100	127	8-Φ18	180	750	800	480	435	460	460	855	915
WQ70-20-7.5	100	100	127	8-Φ18	180	750	800	480	435	460	460	855	915
WQ100-13-7.5	100	100	127	8-Φ18	180	780	830	480	435	440	440	855	915
WQ150-8-7.5	125	150	152	8-Φ22	240	725	755	505	480	440	455	850	900
WQ210-6-7.5	165	200	202	8-Φ22	295	1000	1165	690	660	630	730	920	980
WQ45-32-11	100	100	127	8-Φ18	180	830	880	530	480	510	515	1000	1200
WQ70-22-11	100	100	127	8-Φ18	180	830	880	530	480	510	515	1000	1200
WQ100-16-11	125	150	152	8-Φ22	240	850	950	550	555	550	600	1050	1250
WQ150-10-11	125	150	152	8-Φ22	240	850	950	550	555	550	600	1050	1250
WQ500-5-11	—	250	—	12-Φ22	350	—	1160	—	800	—	860	1150	1350
WQ70-32-15	100	100	127	8-Φ18	180	830	880	530	480	510	515	1000	1200
WQ100-22-15	100	100	127	8-Φ18	180	830	880	530	480	510	515	1000	1200
WQ150-17-15	125	150	152	8-Φ22	240	850	950	550	555	550	600	1050	1250
WQ250-13-15	125	150	152	8-Φ22	240	850	950	550	555	550	600	1050	1250
WQ550-6-15	—	250	—	12-Φ22	350	—	1160	—	800	—	860	1150	1350



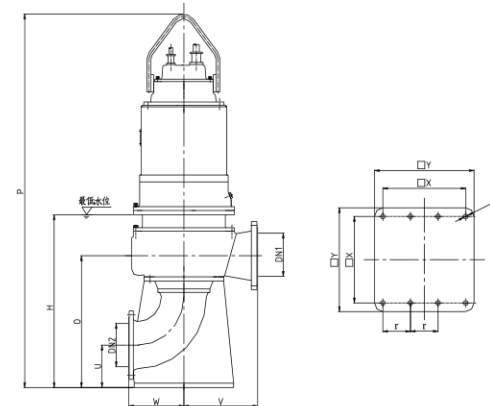
固定干式安装尺寸表

Fixed dry type mounting

口径	DN250		DN300		DN400		
	机座号	M280A (M280G)	M315	M250A (M250G)	M315	M280A	M280A (M280G)
最小池口尺寸	1700 × 1300	1700 × 1300	1600 × 1200	1700 × 1300	1900 × 1400	1900 × 1400	
O*	853	853	880	835	950	1050	
H*	1100	1100	1100	1000	1100	1100	
P*	2800	3300	2700	3200	2900	3100	
U*	295	295	295	295	320	350	
V*	523	523	525	570	650	700	
W*	360	360	458	520	478	600	
X*	680	680	680	680	680	900	
Y*	800	800	800	800	800	1000	
r*	0	0	0	0	240	300	
e*	4-Φ32	4-Φ32	4-Φ32	4-Φ32	8-Φ32	8-Φ32	
DN1	250	250	300	300	400	400	
DN2	250	250	300	300	400	400	

口径	DN400		DN500		DN600
	机座号	M315	M355	M315	M355
最小池口尺寸	1900 × 1400	2250 × 1700	2150 × 1700	2250 × 1700	
O*	1050	1100	1160	1100	见 我 公 司 详 图
H*	1300	1400	1500	1500	
P*	3400	3700	3600	3700	
U*	350	450	450	450	
V*	700	870	800	750	
W*	600	650	650	650	
X*	900	1200	1200	1200	
Y*	1000	1400	1400	1400	
r*	300	400	400	400	
e*	8-Φ32	8-Φ34	8-Φ34	8-Φ34	
DN1	400	400	500	500	
DN2	400	400	500	500	

*为参考尺寸，订货时需根据原型确认。 This dimension is only for reference, please confirm it when placing the order.

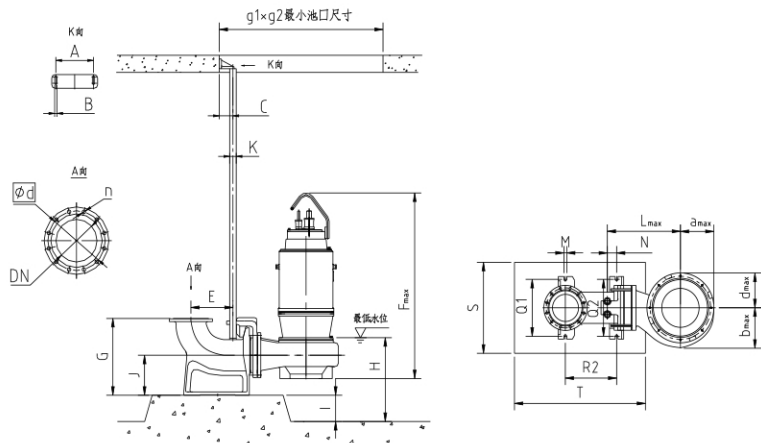


M250A(M250G)~M280A(M280G)自耦安装尺寸表

M250A(M250G)~M280A(M280G) auto coupling installation dimensions table

口径	DN250	DN300	DN400	
机座号	M280A(M280G)	M250A(M250G)	M280A	M280A(M280G)
自耦	250GAK	300GAK	400GAK	
最小池口尺寸	1700×1300	1600×1200	1900×1400	1900×1400
DN	250	300	400	400
A	230	230	280	280
B	2-14	2-12	2-14	2-14
C	125	140	155	155
E	385	440	700	700
Fmax	2900	2300	2200	2400
Lmax	650	770	740	850
amax	370	375	480	450
bmax	450	425	540	560
dmax	310	375	385	355
G	675	720	855	855
H	1200	1100	1200	1200
I	230	250	400	400
J	352	386	455	455
K	Φ60	Φ60	Φ89	Φ89
M	4-26	6-28	6-28	6-28
N	85	75	67	67
Q1	500	500	640	640
Q2	500	500	640	640
R1	—	140	265	265
R2	470	450	550	550
S	800	880	900	900
T	1200	1300	1400	1400
n	12-Φ22	12-Φ22	16-Φ26	16-Φ26
φd	Φ350	Φ400	Φ515	Φ515

*为参考尺寸，定货时需根据原型确认 This dimension is only for reference, please confirm it when placing the order.

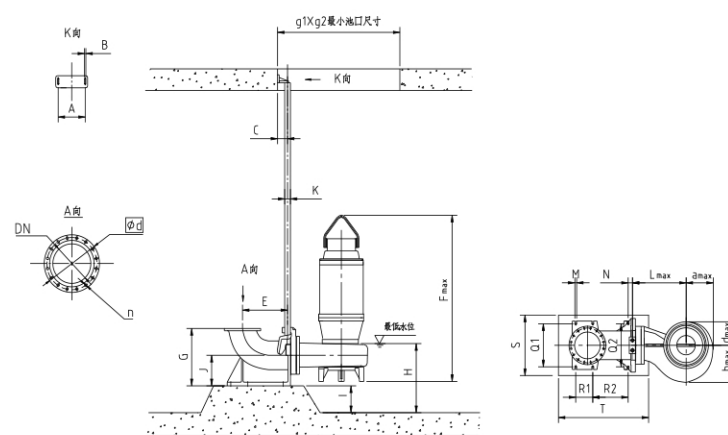


M315~M355自耦安装尺寸表

M315~M355 auto coupling installation dimensions table

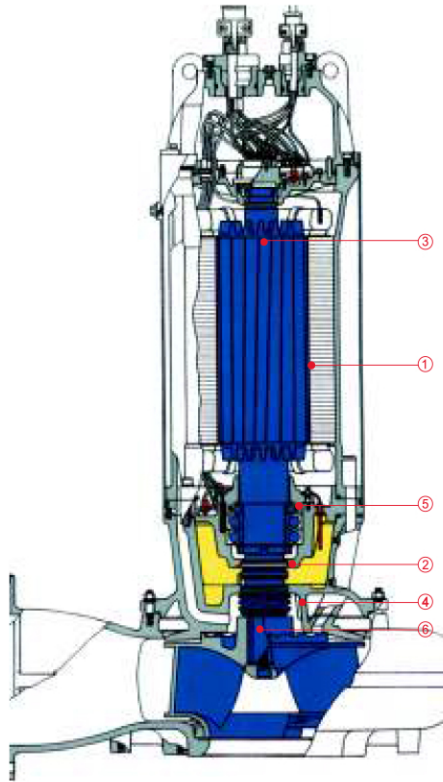
口径	DN250	DN300	DN400		DN500		DN600
机座号	M315	M315	M315	M355	M315	M355	M355
自耦	250GAK (A)	300GAK (A)	400GAK		500GAK		600GAK
最小池口尺寸	1700×1300	1600×1200	1900×1400	1900×1400	2250×1700	2250×1700	3500×2500
DN	250	300	400	400	500	500	
A	270	280	280	280	280	280	
B	2-14	2-14	2-14	2-14	2-14	2-14	
C	155	155	155	155	155	155	
E	400	552	700	700	739	739	
Fmax	2900	3000	3100	3200	3100	3200	
Lmax	650	700	850	1035	955	916	
amax	370	400	450	640	650	555	
bmax	450	430	560	705	690	630	
dmax	310	340	355	525	650	480	
G	680	720	855	855	920	920	
H	1200	1100	1200	1200	1300	1300	
I	400	250	400	450	450	500	
J	357	388	455	455	455	455	
K	Φ76	Φ89	Φ89	Φ89	Φ89	Φ89	
M	4-26	6-28	6-28	6-28	6-28	6-28	
N	22	58	67	67	94	94	
Q1	500	500	640	640	640	640	
Q2	500	500	640	640	640	640	
R1	—	180	265	265	265	265	
R2	470	420	550	550	550	550	
S	800	880	900	900	1000	1000	
T	1200	1300	1400	1400	1400	1400	
n	12-Φ22	12-Φ22	16-Φ26	16-Φ26	20-Φ26	20-Φ26	
φd	Φ350	Φ400	Φ515	Φ515	Φ620	Φ620	

*为参考尺寸，定货时需根据原型确认 This dimension is only for reference, please confirm it when placing the order.



见
我
公
司
详
图

监控保护系统
Monitoring and control system



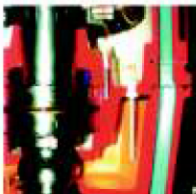
带温度传感器的
TCS—系统
TCS system with
temperature sensor

- ① 定子 Stator
- ② 下轴承 Upper bearing
- ③ 上轴承 Lower bearing



带温度传感器的
DI—系统
Disystem with
temperature sensor

- ④ 油室 Oil chamber
- ⑤ 电机室底部 Base of motor room
- ⑥ 接连室 Connection chamber



多年的成功经验已经证实：
通过24小时自动监控系统可以得到
可靠的密封和温度监控

The successful experience of these years has approved that it is able to get reliable hermetical seal monitoring and temperature monitoring by 24h automatic monitoring system.

TCS电机（温度控制）装置
TCS motor (temperature control) equipment

电机监测 Motor monitoring
电机的每一项均设有温度传感器。当电机过热时将发出报警信号并自动切断电源。
Each item of motor is equipped with temperature sensor. When the motor is overheated, it will send out a warning and cut off the power supply automatically.

轴承监测 Bearing monitoring
轴承设有温度传感器。当电机轴承过热时将发出报警信号并自动切断电源。
The bearing is equipped with temperature sensor. When the motor bearing is overheated, it will send out a warning and cut off the power supply automatically.

DI（密封监控）装置 DI (hermetical seal) device
密封监控装置可监测是否有水从轴封处浸入油室。另外，M132以上的电机在电机腔和接线室内设有单独的传感器。

Hermetical seal device monitors if there is water immerge in the oil chamber from axial seal point. Besides, the motor chamber and connection chamber of motors of M132 above are equipped with individual sensors.

当泄露发生时，DI传感器能够早期预警，及时检修可以避免机组受到大的破坏。

Once there is leakage, DI sensor will send out early-warning, and enable the operator to overhaul in time, this protects the machine against further breakage.

为了水泵能可靠、安全运行
To make the water pump operate reliably and safely

我公司采用特有的“LSK-1系列”水泵及水处理设备专用控制柜。该系列控制柜不同于普通电器控制柜，她是确保配套泵及设备长久可靠安全运行的必备选择。她凝结多年的经验及国外先进的控制技术，精心设计而成。她已广泛应用于众多知名国家工程。她不但具有常规的电保护功能：短路、缺相、断相、过载，还特别具有专用泵保护功能：油室漏水、电机腔漏水、接线盒漏水、电机定子绕组过热、轴承超温、干运转系列保护。同时还具备特有的技术专利：泵电机防凝露自动除湿控制功能，防止电机内部爬电现象，确保电机的绝缘度。

(一)电控柜

1、用途

对水泵进行自动保护（过载缺相、短路、渗漏、超温、除湿等保护），实行泵的无人看管，自动运行及信号输出）。有手动和自动控制两种方式。

2、适应范围

- a. 环境温度5~40℃（特殊使用介质可通过技术保障达到设计要求）；
- b. 空气相对湿度不超过90%；
- c. 无爆炸危险的场合，且介质中无足以腐蚀金属和破坏绝缘的气体 and 导电尘埃。

3、端子箱

每套水泵系统可配套中间端子箱一只，用于水泵与控制柜的中间连接，详见示意图。

(二)液位开关

液位开关用于泵站的水控制，灵活方便，信号可靠，能根据水位的变化对水泵进行自动控制。

Our company adopts the special "LSK-1 series" water pump and water treatment equipment special control cabinet. Different from other ordinary electric control cabinets, it is a necessary selection for ensuring long-tome, reliable and safe operation of auxiliary pumps and equipment. It is elaborately designed by integrating years of experience of and adopting internationally advanced control technology. It has been widely used in many famous projects in the country. In addition to regular electric protection functions for short circuit, phase failure, phase loss and overloading, it is also provided with special protection functions: protection against oil chamber water leakage, motor chamber water leakage, junction box water leakage, motor stator winding overheating, bearing over-temperature, dry operation and others. Meanwhile, it is also provided with special technical patents: pump motor dew resistant automatic dehumidifying and controlling functions that can prevent creepage inside the motor and ensure motor insulation.

(I) Electric control cabinet

1. Usage

To automatically protect the water pump (protection against overloading, phase loss, short circuit, leakage, over-temperature, dehumidifying and etc.), realize unattended and automatic operation and signal output of the pump). Including two modes such as manual control and automatic control.

2. Application range

- a. Ambient temperature 5~40℃ (special working media can meet design requirements through technology guarantee).
- b. Relative humidity of air shall not exceed 90%.
- c. Locations without the danger of explosion and the media shall not contain any gas or conducting dust that may corrode metal and damage insulation.

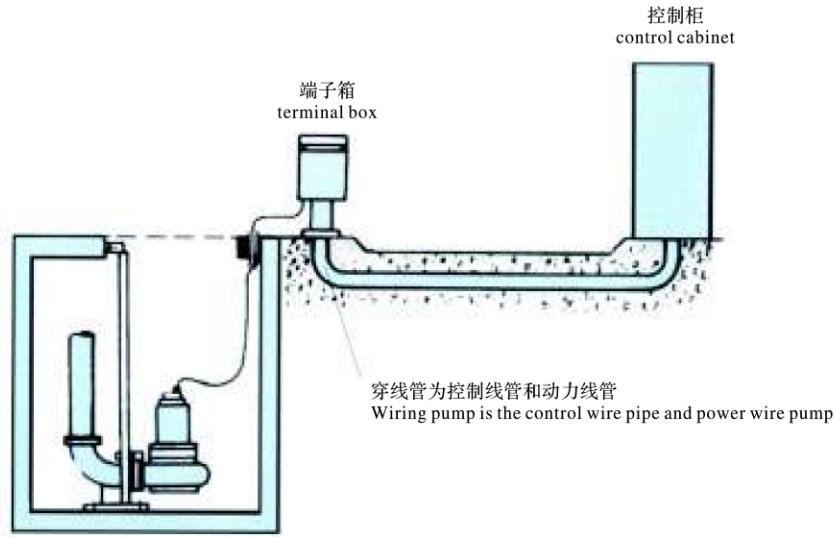
3. Terminal box

Each set of water pump system can be equipped with a middle terminal box for the middle connection of water pump and control cabinet. See the schematic diagram for details.

(II) Liquid level switch

The liquid level switch is flexible and convenient with reliable signals. It is used for water control in the pump station and can automatically control the water pump according to the changes of water level.

典型泵站示意图
Typical pump station diagram



说明 Notes

- 1、所有信号线可埋一根穿线管；
 - 2、动力线按提供的电缆线直径、数量自行确定预埋管子的大小；
 - 3、动力线和信号线必须分别埋设管道，不可混穿；
 - 4、端子箱与控制柜之间可采用直流电流信号，实现长距离输送，而无衰减。
1. All signal wires can use one embedded wire tube.
 2. The size of the pre-embedded tube for the power line depends on the diameter and quantity of cables supplied.
 3. Different tubes shall be embedded for power line and signal wires and cannot be mixed.
 4. DC signals can be used between the terminal box and control cabinet, so as to realize long distance transportation without attenuation.

常见故障排除 Failures causes and troubleshooting

故障现象 Failure	原因分析 Possible causes	排除方法 Troubleshooting
流量或扬程下降 Fall of flow or head	<ol style="list-style-type: none"> 1、泵反转 2、装置扬程与额定扬程不符 3、抽吸的介质走旁路 4、出水管泄漏 5、出水管局部可能被沉积物堵死 6、水泵流道堵塞 7、叶轮、密封环磨损 	<ol style="list-style-type: none"> 1、关掉控制柜的总电源，调换任何二相电源线 2、重新计算装置扬程以确定水泵型号 3、检查输水管路 4、找出泄漏，进行修正 5、检查管路，清理或更换新的 6、水泵起吊清理，如果水泵放在滤网内，同样需要检查和清理 7、吊起水泵，按叶轮口环实际尺寸配密封环
无流量 No flow	<ol style="list-style-type: none"> 1、气塞 2、检查出水阀门 3、泵反转 4、进口或叶轮堵塞 5、排水管道堵塞 	<ol style="list-style-type: none"> 1、（1）连续的打开和关闭阀门几次 （2）启动/停止泵几次，每次重新启动间隔时间不少于10分钟 （3）要根据不同的安装方法，检查是否需要安装一个排气阀。 2、（1）如果阀门处于关闭状态应打开 （2）如果装反，应倒过来安装 3、关掉控制柜的总电源，调换任何二相电源线 4、吊起水泵，清理进口或叶轮 5、清理排水管道

常见故障排除

Failures causes and troubleshooting

故障现象 Failure	原因分析 Possible causes	排除方法 Troubleshooting
运行有杂音或振动 Noise or vibration in running	<ol style="list-style-type: none"> 1、安装系统基础强度不够或水泵安装不平 2、轴承磨损 3、叶轮松动或脱落 4、叶轮有杂物缠绕或堵塞 5、叶轮部分被杂物打碎或磨损 6、叶轮口环与密封环摩擦 7、泵未在运行范围内运行 	<ol style="list-style-type: none"> 1、将基础加固，并将水泵固定 2、更换轴承 3、紧固叶轮 4、清理流道 5、更换叶轮 6、检查叶轮，校正转子轴平行度 7、检查泵的运行参数
水泵不能启动 Pump not able to start	<ol style="list-style-type: none"> 1、无电源 2、电器失灵 3、绕组、接头或电缆断路 4、水泵被堵塞 5、浮球故障 6、缺相 7、控制柜故障显示 	<ol style="list-style-type: none"> 1、检查控制柜是否有电源 2、更换故障电器 3、用万用表检查，如果证明是断路，检查绕组、接线头和电缆 4、切断电源。将泵移出污水池，清除障碍物，复位前须试用 5、浮球开关短接，看水泵是否能启动。如能启动应检查浮球开关 6、检查线路 7、排除故障

常见故障排除

Failures causes and troubleshooting

故障现象 Failure	原因分析 Possible causes	排除方法 Troubleshooting
水泵运转中非正常停机 Pump stopping abnormally in running	<ol style="list-style-type: none"> 1、电压低 2、电压过高 3、电源断开 4、控制柜故障 5、保护器动作 6、缺相 7、长期超额定电流使用 8、在机壳底座盖板区域堆积了泥浆或其它沉积物 	<ol style="list-style-type: none"> 1、检查控制柜的电压，如电压过低暂时不能使用，请调整 2、装变压器，将电压调到规定的范围 3、检查熔丝或断路器 4、检查控制柜，进行修理或更换 5、请本公司售后服务部进行维修 6、检查线路 7、按水泵的实际规定值使用 8、清理水泵和污水池，参见安装说明中的有关部分
水泵启停频繁或失灵 Pump frequently starting and stopping or out of control	<ol style="list-style-type: none"> 1、浮球开关上下距离过短 2、逆止阀故障，逆止阀不能止回，使液体倒流放入污池 3、浮球开关失灵 4、浮球卡在工作开关的位置 	<ol style="list-style-type: none"> 1、重调上下浮球开关的距离，延长运行时间 2、检查并维修 3、检查浮球开关，如需要应给予更换 4、松开浮球开关，如需要可改变位置



设备的任何调节需获得我公司的许可!

To adjust equipment shall be approved by us!